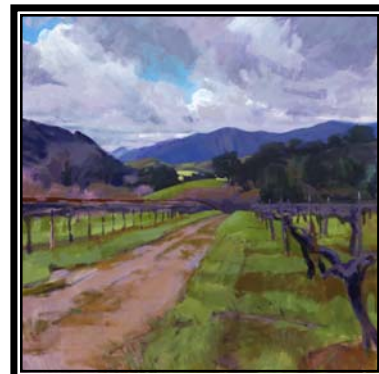




## 2008 Zinfandel Estate

### The Journey:

Grapes were first planted at Rancho Saucelito in 1880, and later a small winery was built. Word spread of fine wine in a beautiful, isolated canyon on the Oceanside of the coast range. Soon families were making the long trek to buy wine and picnic at the vineyard. Although the winery survived Prohibition and the revenue's ax, sometime during the 1940s it was abandoned, and fire, cattle and deer destroyed the trunks of the old vines. But the roots, deep in the soil, survived and continued to send forth new growth each spring. In 1974 the homesteader's granddaughters sold the land to William S. Greenough, who revived the vines and planted additional Zinfandel. Today these historic vines, farmed without irrigation, are producing grapes and wine as they did more than 130 years ago.



**The Blend:** 100% Zinfandel

**The Vineyard:** 100% Saucelito Canyon Estate

**The Appellation:** 100% Arroyo Grande Valley

**The Wine:** The 2008 vintage opens with signature aromas from our historic Zinfandel vines. This classic Saucelito Canyon nose features bright cherry, dried fig & a signature cola-berry aroma, developing further with deep brown baking spices & a hint of vanilla extract. A velvety smooth mouth feel surrounds flavors of raspberry and strawberry jam. Enjoyable yet youthful tannins support a full, rich lingering finish. A true beauty.

*Cases Produced 624*

**New Release** - Awards coming soon...

[www.SaucelitoCanyon.com](http://www.SaucelitoCanyon.com)

